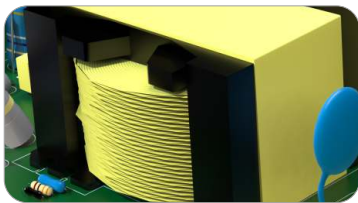


LBD-MDR

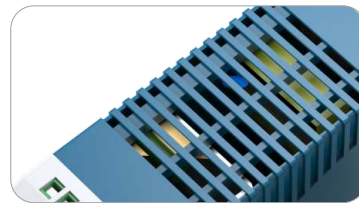
导轨开关电源



全铜变压器



电容滤波



散热



轨道安装

型号说明/选型，写法举例：LBD-MDR-100-12

对应编号	LB	D	-	●	-	●●	-	●●
	1	2		3		4		5
1	LB	LANBOO 蓝波代码						
2	开关电源代码	D						
3	系列号	MDR (导轨式开关电源供应器)						
4	功率(W)	10W/20W/40W/60W/100W						
5	输出电压(V)	12V/24V						

性能参数

输出	直流电压	12V	24V
	纹波及噪声①	<120mV	<150mV/<200mV
	电压调节范围	±10%	
	电压精度	±1%	
	线性调整率	±1%	
	负载调整率(MDR-10/20)	±3%	±2%
	负载调整率	±1%	
输入	电压范围/频率	85-264VAC 47Hz~63Hz(120VDC~370VDC)	
	冲击电流	110VAC 35A, 220VAC 70A	
保护特性	过载保护	≥105%-150% 保护类型：打嗝模式，解除异常情况自动恢复正常	
	过压保护	>135% 保护类型：关闭输出，异常情况自动恢复正常	
	过温保护(MDR-100)	>85°时 关闭输出，温度下降后，电源重启后恢复	



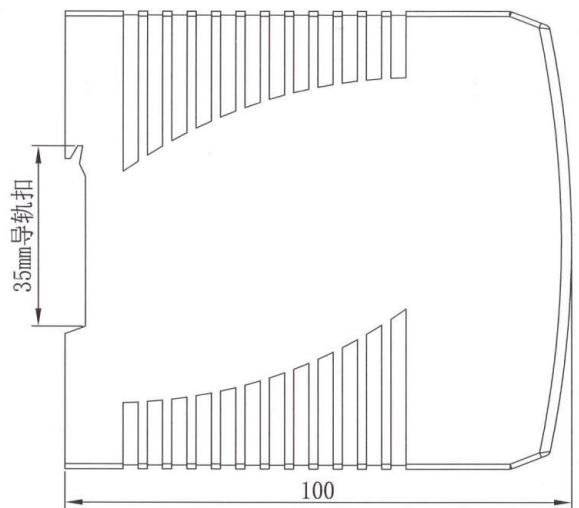
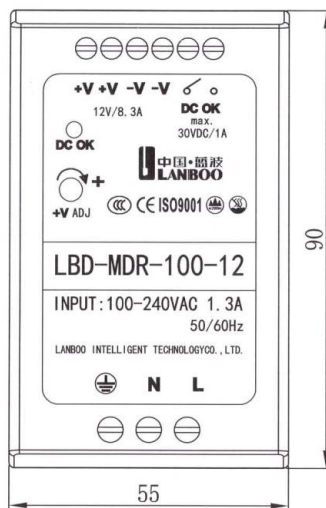
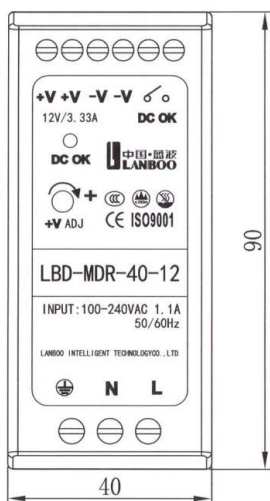
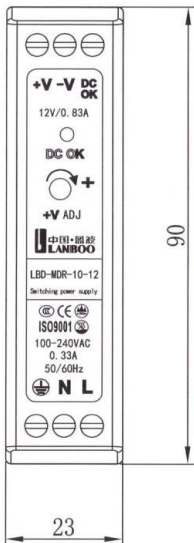
环境	工作温度、湿度	-20°C~+70°C: 20%~90RH
	储存温度、湿度	-40°C~+85°C: 10%~90RH
安全	耐压	输入—输出:3.0KVAC 1min
	漏电流	输入—输出:1.5KVAC时<5mA
	绝缘电阻	输入—输出: 500VDC/100MΩ 输入—外壳: 500VDC/100MΩ 输出—外壳: 500VDC/100MΩ
其他	产品认证	CCC CE RoHS REACH
	质保	66个月
备注	<p>①纹波和噪声测量方法:使用一条12双绞线,同时终端要并联0.1uF和47uF的电容,在20MHz带宽下进行测量。</p> <p>②如未特别说明,所有规格参数均在输入为230VAC、额定负载、25°C环境温度下进行量测。</p> <p>精度:包含设定误差,线性调整率和负载调整率。</p> <p>线性调整率测试方法:在额定负载下从低电压到高电压测试。</p> <p>负载调整率测试方法:从0%-100%额定负载。</p> <p>启动时间是在冷启动状态下测得,快速频繁开关机可能会使启动时间增加,当操作海拔高于2000米时,操作环境温度需调降5°C/1000米。</p>	

型号	LBD-MDR-10		LBD-MDR-20		LBD-MDR-40		LBD-MDR-60		LBD-MDR-100	
直流电压	12V	24V	12V	24V	12V	24V	12V	24V	12V	24V
额定电流	0.84A	0.42A	1.67A	1A	3.3A	1.7A	5A	2.5A	7.5A	4A
额定功率	10W	10W	20A	24A	40W	40.8W	60A	60A	90A	96A
工作电流	0.33A/110VAC	0.21A/230VAC	0.55A/110VAC	0.35A/230VAC	1.1A/110VAC	0.7A/220VAC	1.8A/110VAC	1A/230VAC	1.3A/110VAC	0.8A/220VAC
效率(典型) ^②	>81%	>84%	>81%	>84%	>86%	>88%	>86%	>88%	>83%	>86%
尺寸	22.5*90*100mm(L*W*H)				40*90*100mm(L*W*H)				55*90*100mm(L*W*H)	
启动、上升、保持时间	1000ms、30ms、25ms:110VAC 500ms、30ms、120ms:220VAC				500ms、30ms、25ms:110VAC 500ms、30ms、120ms:220VAC				3000ms、50ms、20ms:110VAC 3000ms、50ms、50ms:220VAC	

MDR-10/20

MDR-40/60

MDR-100/120





中国·蓝波
LANBOO

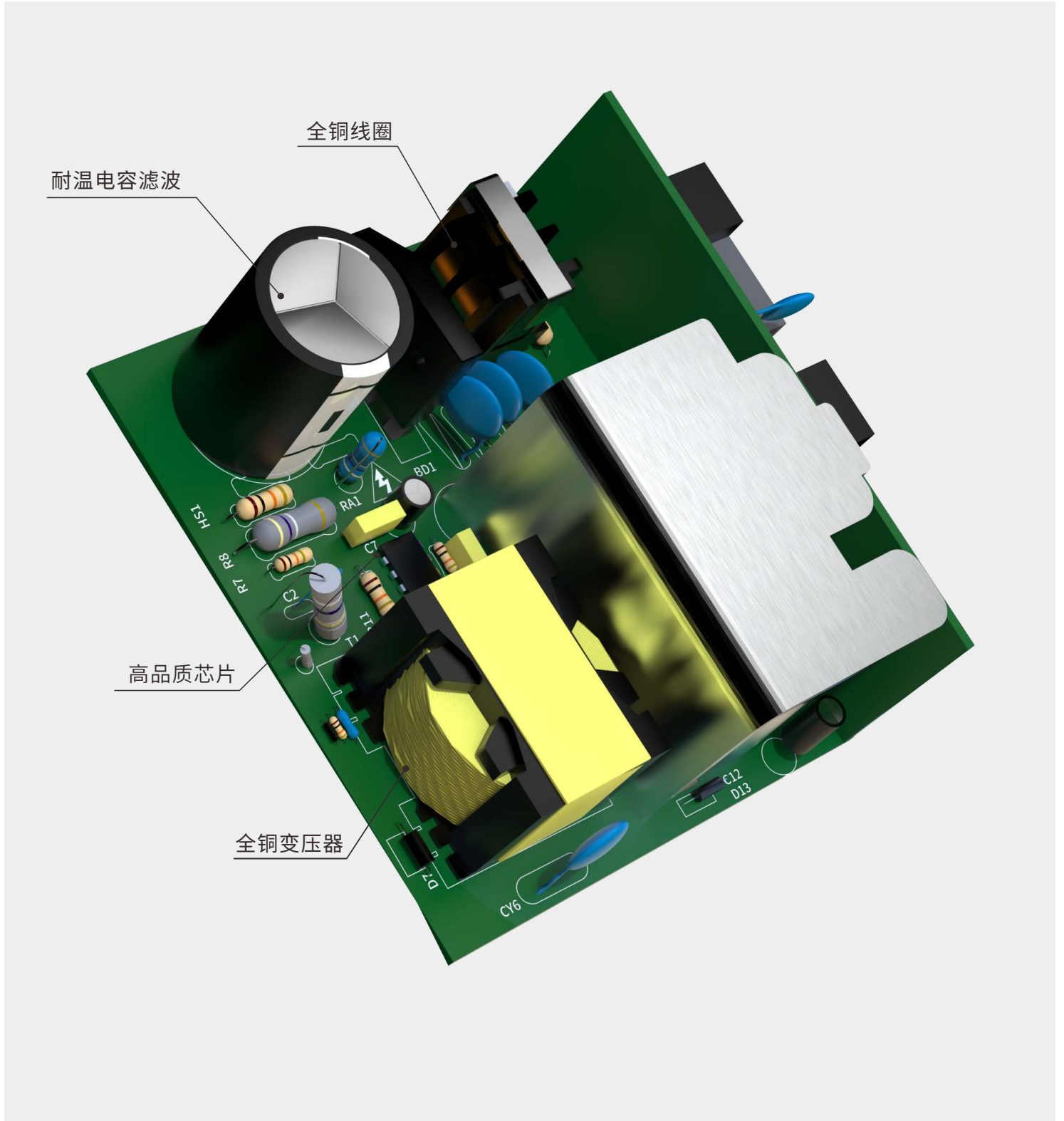
蓝波大电流开关

Pioneer of High-Current Switches

CE RoHS Intertek ISO9001 多项专利

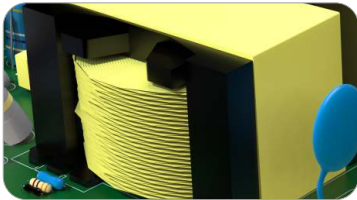
LBD-MDR 规格书

导轨开关电源

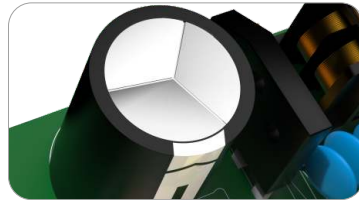


LBD-MDR

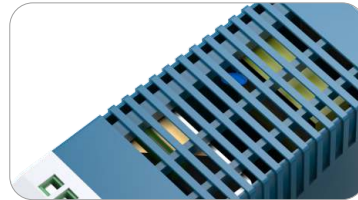
Switch power supply



All copper transformer



Capacitor filter



Radiating



Rail mounting

Model Description/Selection, Example:LBD-MDR-100-12

对应编号	LB	-	W3	/	●●	/	●●	/	●●	/	●●
	1		2		3		4		5		6
1 LB	LANBOO										
2 Code	D										
3 Series No.	MDR (Rail mounted switch mode power supply)										
4 Power(W)	10W/20W/40W/60W/100W										
5 Output voltage(V)	12V/24V										

The performance parameters

Output	DC Voltage	12V	24V
	Ripple and noise ①	<120mV	<150mV/<200mV
	Voltage regulation range	±10%	
	Voltage accuracy	±1%	
	Line Regulation	±1%	
	Load Regulation(MDR-10/20)	±3%	±2%
	Load Regulation	±1%	
Input	Voltage range/frequency	85-264VAC 47Hz~63Hz(120VDC~370VDC)	
	Impulse current	110VAC 35A, 220VAC 70A	
Protective characteristics	Overload protection	≥105%-150% Protection type: Hiccup mode, automatically returns to normal after resolving abnormal situations	
	Overvoltage protection	>135% Protection type: Close output, automatically restore to normal in case of abnormal situations	
	Overtemperature protection(MDR-100)	>85°, Turn off output, restore after power restart after temperature drops	



Environment	Operating temperature and humidity	-20°C~+70°C: 20%~90RH
	Storage temperature and humidity	-40°C~+85°C : 10%~90RH
Secure	Pressurization	Input — Output:3.0KVAC 1min
	Leakage current	Input — Output:1.5KVAC<5mA
	Insulation resistance	Input — Output: 500VDC/100MΩ Input—Shell: 500VDC/100MΩ Output—Shell: 500VDC/100MΩ
Other	Product Certification	CCC CE RoHS REACH
	Quality assurance	66 months
Notes	<p>① Ripple and noise measurement method: a 12 twisted pair is used, and the terminal should be connected in parallel with 0.1uF and 47uF capacitors, and the measurement is carried out under 20MHz bandwidth.</p> <p>② Unless otherwise specified, all specifications and parameters are measured under the input of 230VAC, rated load and 25 °C ambient temperature.</p> <p>Accuracy: including setting error, linear adjustment rate and load adjustment rate.</p> <p>Linear regulation rate test method: test from low voltage to high voltage under rated load.</p> <p>Load regulation rate test method: from 0% to 100% of rated load.</p> <p>The start-up time is measured in the cold start state. Fast and frequent switching on and off may increase the start-up time. When the operating altitude is higher than 2000 meters, the operating ambient temperature needs to be reduced by 5 °C/1000 meters.</p>	

Model	LBD-MDR-10		LBD-MDR-20		LBD-MDR-40		LBD-MDR-60		LBD-MDR-100	
DC Voltage	12V	24V	12V	24V	12V	24V	12V	24V	12V	24V
Rated current	0.84A	0.42A	1.67A	1A	3.3A	1.7A	5A	2.5A	7.5A	4A
Rated power	10W	10W	20A	24A	40W	40.8W	60A	60A	90A	96A
Working current	0.33A/110VAC	0.21A/230VAC	0.55A/110VAC	0.35A/230VAC	1.1A/110VAC	0.7A/220VAC	1.8A/110VAC	1A/230VAC	1.3A/110VAC	0.8A/220VAC
Efficiency (typical)	>81%	>84%	>81%	>84%	>86%	>88%	>86%	>88%	>83%	>86%
Size	22.5*90*100mm(L*W*H)				40*90*100mm(L*W*H)				55*90*100mm(L*W*H)	
Start, rise, hold time	1000ms、30ms、25ms:110VAC 500ms、30ms、120ms:220VAC				500ms、30ms、25ms:110VAC 500ms、30ms、120ms:220VAC				3000ms、50ms、20ms:110VAC 3000ms、50ms、50ms:220VAC	

MDR-10/20

MDR-40/60

MDR-100/120

